



Test ID: Remee Cat6 STP 6B234STPEN S45-175... **Test Standard:** ANSI/TIA-568.2-D-2018

Tester Model : LanTEK IV 3000

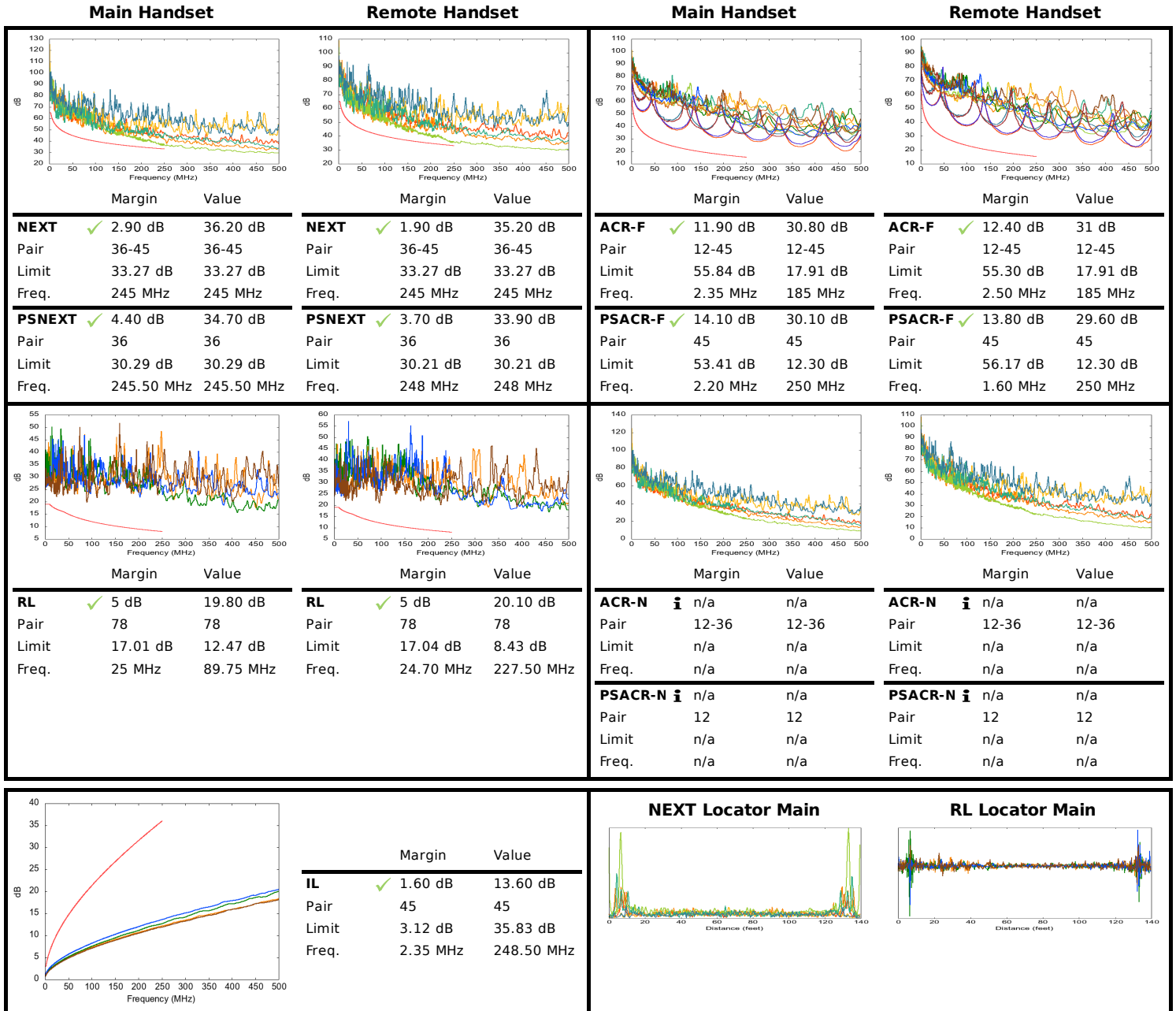
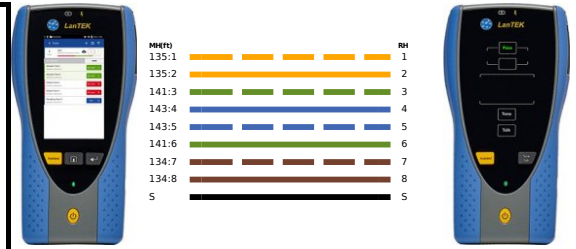
Date/Time: 03/02/2021 03:39 PM
 Project Name: Simply45_20210308213839
 Customer Name: Go Simply Connect
 Operator: Default User

Test Limit: Channel/Cat6
 Cable Brand/Model: Generic/Cat6-STP
 Cable Type/Shield: Cat6/STP
 Cable NVP: 72 %
 Main Connector: Generic
 Remote Connector: Generic

Main Handset
 S/N: 19310002
 S/W: 1.50
 Calibration Date: 01/01/2021
 Cat 8.1 RJ45 CH : S/N 19280046

Remote Handset
 S/N: 19310002
 S/W: 1.50
 Calibration Date: 01/01/2021
 S/N 19280005

Low Frequency Tests				Headroom Summary			
Test	Pair	Limit	Result	Margin (dB)	MHz	Pair	Side
Length	78	328' 1" ft	134' 0" ft ✓	NEXT 1.90	245	36-45	Remote
Delay	45	555 ns	202 ns ✓	PSNEXT 3.70	248	36	Remote
Skew	45	50 ns	13 ns ✓	RL 5	24.70	78	Remote
Impedance	n/a	n/a	n/a	IL 1.60	2.35	45	--
Loop Res	45	25 Ω	14.07 Ω ⓘ	TCL -5.60	2.50	45	Remote
				ELTCTL 3.30	1	45	Main
DCRU							
Intra-pair	45	0.20 Ω	6.59 Ω ⓘ				
P2P	45-78	0.20 Ω	0.91 Ω ⓘ				



Supported Applications:

Ethernet 10BASE-T, ADSL, VDSL, Analog Phone, ATM 25.6, ATM 51.84, ISDN BRI, ISDN PRI, Ethernet 100BASE-TX, Ethernet 1000BASE-T, Ethernet 1000BASE-TX, PoE IEEE 802.3af/at/bt, HDBaseT 1080P, VOIP, ATM 155.52, NBASE-T 2.5G, NBASE-T 5G, HDBaseT 2k, HDBaseT 4k, ATM 1.2G

Report Generated 07/27/2021 07:32 PM