



Test ID: Genesis Cat5e STP 5178 S45-1550 Cha... **Test Standard:** ANSI/TIA-568.2-D-2018

Tester Model : LanTEK IV 3000

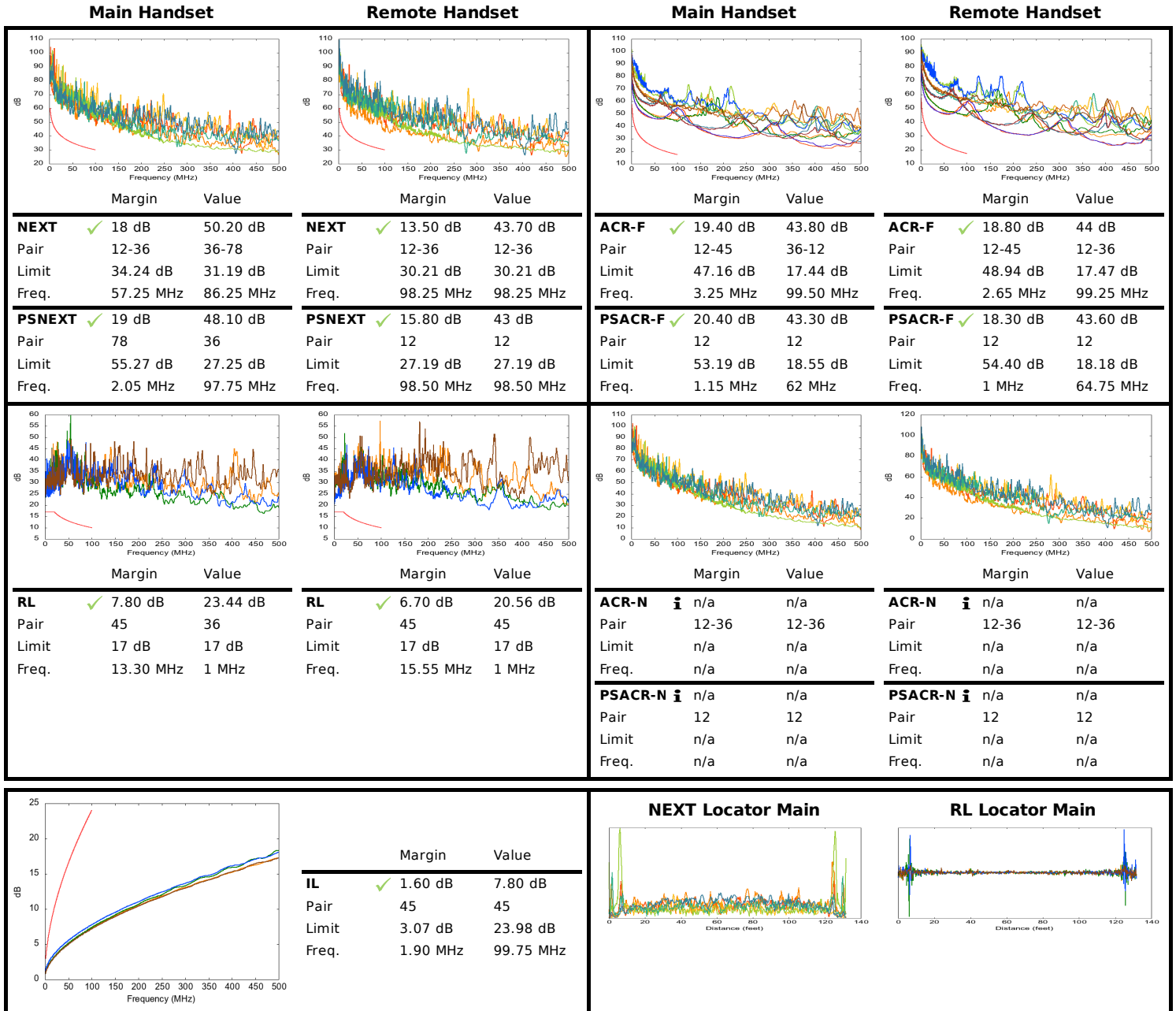
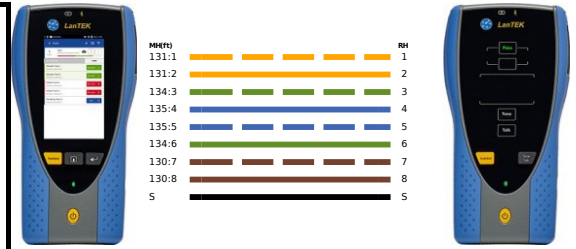
Date/Time: 03/04/2021 04:19 PM
 Project Name: Simply45_20210308213839
 Customer Name: Go Simply Connect
 Operator: Default User

Test Limit: Channel/Cat5e
 Cable Brand/Model: Genesis/5178
 Cable Type/Shield: Cat 5e/-
 Cable NVP: 69 %
 Main Connector: Generic
 Remote Connector: Generic

Main Handset
 S/N: 19310002
 S/W: 1.50
 Calibration Date: 01/01/2021
 Cat 8.1 RJ45 CH : S/N 19280046

Remote Handset
 S/N: 19310002
 S/W: 1.50
 Calibration Date: 01/01/2021
 S/N 19280005

Low Frequency Tests				Headroom Summary				
Test	Pair	Limit	Result	Margin (dB)	MHz	Pair	Side	
Length	78	328' 1" ft	130' 4" ft ✓	NEXT	13.50	98.25	12-36	Remote
Delay	45	555 ns	198 ns ✓	PSNEXT	15.80	98.50	12	Remote
Skew	45	50 ns	6 ns ✓	RL	6.70	15.55	45	Remote
Impedance	n/a	n/a	n/a	IL	1.60	1.90	45	--
Loop Res	45	25 Ω	17.92 Ω	TCL	n/a	n/a	n/a	n/a
				ELTCTL	n/a	n/a	n/a	n/a
DCRU								
Intra-pair	45	0.20 Ω	8.45 Ω					
P2P	45-78	0.20 Ω	1.39 Ω					



Supported Applications:

Ethernet 10BASE-T, ADSL, VDSL, Analog Phone, ATM 25.6, ATM 51.84, ISDN BRI, ISDN PRI, Ethernet 100BASE-TX, Ethernet 1000BASE-T, PoE IEEE 802.3af/at/bt, HDBaseT 1080P, VOIP, ATM 155.52, NBASE-T 2.5G

Report Generated 07/27/2021 07:17 PM

Page 1